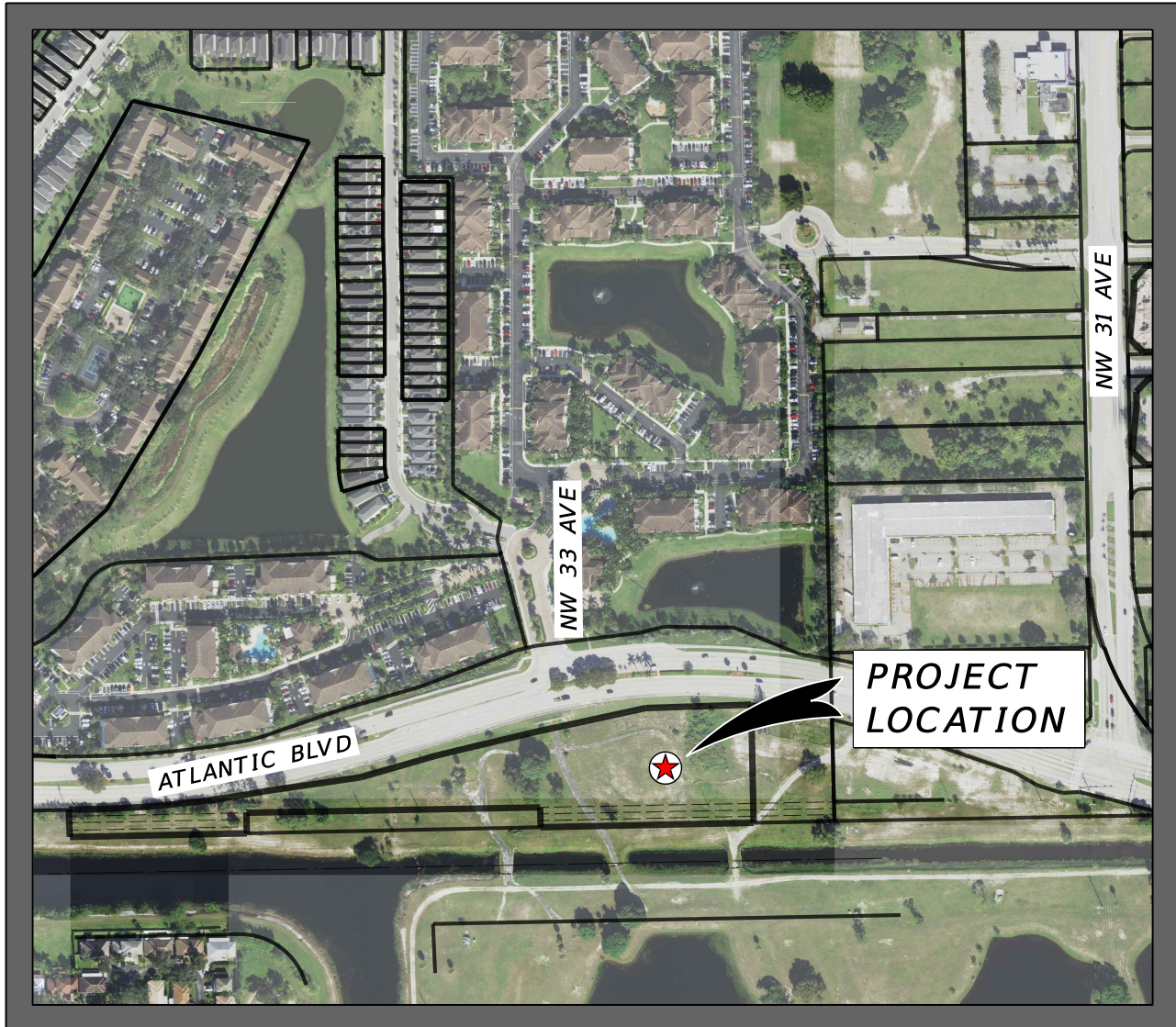


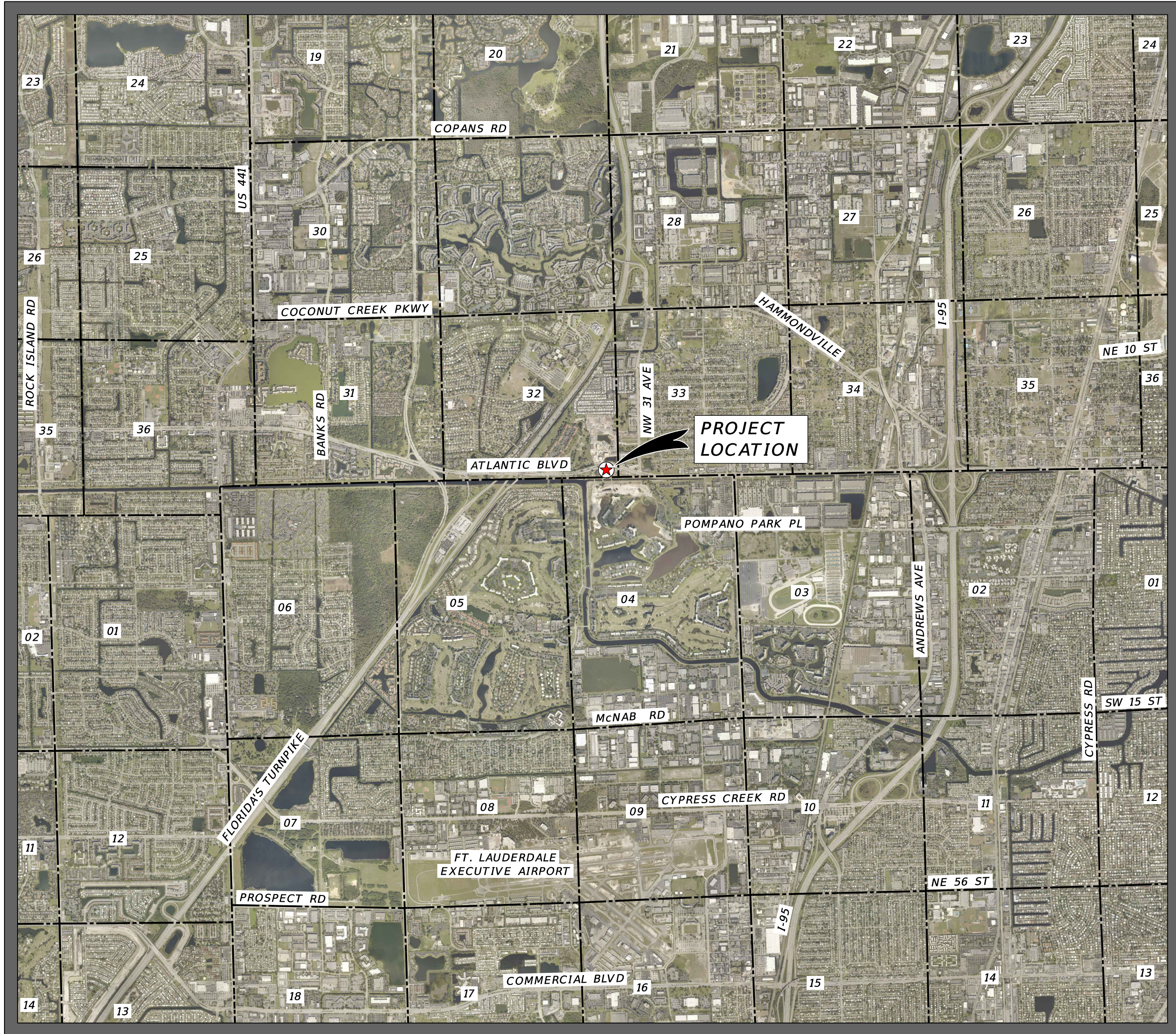
PALM AIRE TENNIS COURTS

CITY OF POMPANO BEACH, BROWARD COUNTY, FLORIDA

RWB / LINARES ARCHITECTURE



VICINITY MAP
SCALE: 1" = 100'



LOCATION MAP
SECTION 32, TOWNSHIP 48 SOUTH, RANGE 42 EAST
SCALE: 1" = 1/2 MILE

TEMPORARY POLLUTION PREVENTION
PAVING & DRAINAGE SYSTEM
PAVEMENT MARKINGS & SIGNAGE
WATER DISTRIBUTION SYSTEM
SEWAGE COLLECTION SYSTEM

INDEX TO SHEETS

DESCRIPTION	SHEET NUMBER
GENERAL NOTES & SPECIFICATIONS	GN1 OF 1
TEMPORARY POLLUTION PREVENTION - PLAN	TPPP1 OF 4
TEMPORARY POLLUTION PREVENTION - PLAN	TPPP2 OF 4
TEMPORARY POLLUTION PREVENTION - GENERAL NOTES & DETAILS	TPPP3 OF 4
TEMPORARY POLLUTION PREVENTION - DETAILS	TPPP4 OF 4
GRADING & DRAINAGE - PLAN	GD1 OF 2
GRADING & DRAINAGE - PLAN	GD2 OF 2
GRADING & DRAINAGE - SECTIONS	GDS1 OF 1
DRAINAGE SYSTEM - DETAILS	DD1 OF 2
DRAINAGE SYSTEM - DETAILS	DD2 OF 2
WATER & SEWER - PLAN	WS1 OF 1
WATER SYSTEM - DETAILS	WD1 OF 4
WATER SYSTEM - DETAILS	WD2 OF 4
WATER SYSTEM - DETAILS	WD3 OF 4
WATER SYSTEM - DETAILS	WD4 OF 4
SEWER SYSTEM - DETAILS	SD1 OF 2
SEWER SYSTEM - DETAILS	SD2 OF 2
MISCELLANEOUS - DETAILS	MD1 OF 3
MISCELLANEOUS - DETAILS	MD2 OF 3
MISCELLANEOUS - DETAILS	MD3 OF 3
LIFT STATION - PLAN & DETAILS	LS1 OF 1
WATER MAIN HORIZONTAL DIRECTIONAL DRILL - PLAN AND PROFILE	HDD1 OF 1
PAVEMENT MARKINGS & SIGNAGE - PLAN & DETAILS	PM1 OF 1

LEGAL DESCRIPTION

A PORTION OF SECTION 32, TOWNSHIP 48 SOUTH, RANGE 42 EAST, BROWARD COUNTY FLORIDA, MORE FULLY DESCRIBE AS FOLLOWS:

COMMENCING AT THE SOUTHEAST CORNER OF SAID SECTION 32; THENCE SOUTH 88°46'53" WEST, ALONG THE SOUTH LINE OF SAID SECTION 32, 183.16 FEET TO THE POINT OF BEGINNING; THENCE CONTINUING SOUTH 88°46'53" WEST ALONG SAID SOUTH LINE 483.58 FEET; THENCE NORTH 01°22'13" WEST 45.05 FEET; THENCE SOUTH 88°53'46" WEST 666.73 FEET; THENCE SOUTH 01°21'04" EAST 46.39 FEET TO A POINT OF INTERSECTION WITH THE SOUTH LINE OF SAID SECTION 32; THENCE SOUTH 88°46'53" WEST ALONG SAID SOUTH LINE 401.70 FEET TO THE NORTHWEST CORNER OF SECTION 4, TOWNSHIP 49 SOUTH, RANGE 42 EAST; THENCE NORTH 02°44'10" WEST 62.24 FEET TO A POINT ON THE SOUTHERLY RIGHT-OF-WAY LINE OF WEST ATLANTIC BOULEVARD (STATE ROAD NO. 814); THENCE ALONG SAID SOUTHERLY RIGHT-OF-WAY LINE THE FOLLOWING SEVEN (7) DESCRIBED COURSES AND DISTANCES: (1) NORTH 88°53'39" EAST 50.57 FEET TO A POINT OF CURVATURE OF A CIRCULAR CURVE CONCAVE NORTHWESTERLY; (2) NORTHEASTERLY ALONG THE ARC OF SAID CURVE TO THE LEFT, HAVING A RADIUS OF 2351.83 FEET, A CENTRAL ANGLE OF 09°34'34", FOR AN ARC DISTANCE OF 393.07 FEET TO A POINT OF NON-TANGENCY; (3) NORTH 81°42'20" EAST 224.69 FEET; (4) NORTH 73°53'20" EAST 182.75 FEET; (5) NORTH 76°38'00" EAST 218.02 FEET; (6) NORTH 77°42'43" EAST 264.67 FEET; (7) NORTH 88°04'51" EAST 239.35 FEET; THENCE SOUTH 01°12'55" EAST 268.39 FEET TO THE POINT OF BEGINNING.

SAID LANDS LYING AND BEING IN THE CITY OF POMPANO BEACH, BROWARD COUNTY, FLORIDA AND CONTAINING 5.001 ACRES, MORE OR LESS.

PERMITTING AGENCIES	SUBMITTED	APPROVED	PERMIT No.	EXPIRES
CITY OF POMPANO BEACH				
BROWARD COUNTY SURFACE WATER MANAGEMENT				
BROWARD COUNTY E.P.D. - WASTEWATER SYSTEM				
SEWMD - RIGHT OF WAY				
FDEP - WATER MAIN EXTENSION				
FDEP - SEWER SYSTEM				
FDOT - RIGHT OF WAY				
FDOT - UTILITIES				
FDOT - DRAINAGE				
NPDES				
NOTE: IF ALL THE ABOVE INFORMATION HAS NOT BEEN PROVIDED, THIS SET OF DRAWINGS SHOULD NOT BE USED FOR CONSTRUCTION.				



Know what's below.
Call before you dig.



WINNINGHAM & FRADLEY
ENGINEERS • PLANNERS • SURVEYORS
111 N.E. 44th STREET • OAKLAND PARK, FL 33334
OFFICE: 954.771.7440 • FAX: 954.771.0288 • WWW.WFENGINEERS.COM

PUBLISHED: 3/10/2025, 10:40:08 AM
PROJECT NUMBER: 22036
DATE: 10/2024

P&Z

03/05/2025